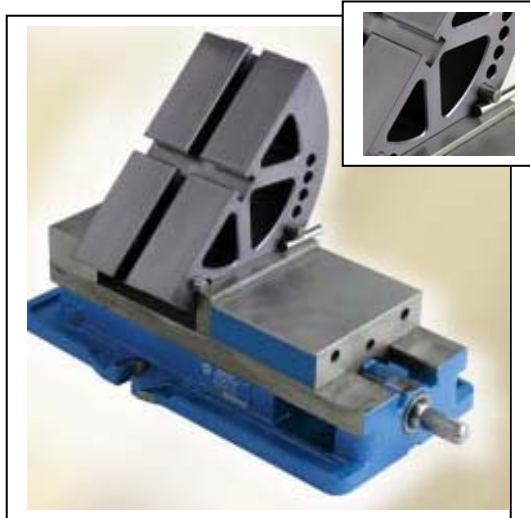


KWIK TILT SINE & TILT TABLE

Set-up in only a few minutes.



Kwik Tilt has come up with an easy and simple way to set up a tilt or sine table using a standard 6" vise. Simply determine the angle you want with the provided dowel pins, and set the Kwik Tilt into the vise. Clamp the vise jaws onto the Kwik Tilt. If your vise is aligned, so is the Kwik Tilt. Remove the Kwik Tilt from the vise when the job is finished. Now you are ready for your next set-up.

Increase your profits while saving **time** and **money** by using the Kwik Tilt. It's that Kwik and Easy!

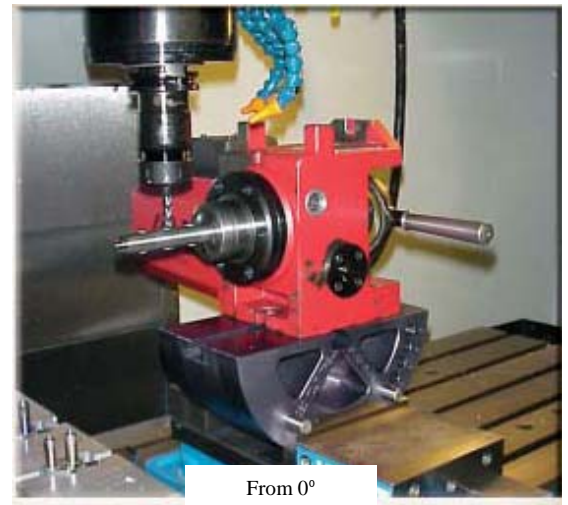
Requirements:

Use Non Lifting Vise Jaws such as the ACCU-LOCK™ type. Jaws must have a minimum height of 1.625" and be at least 6" in length.

Features:

- Hard anodized 6061-T6 Aluminum alloy.
- Precision machined with ground surfaces.
- Working area is 5.0~4.8" x 10.0~9.8", including two machined 5/8" T-Slots.
- Angularity +30 seconds from the jaw plane.
- Squareness and Parallelism within .0008".

NOTE: For other angles use Gage Blocks that are calculated using a sine table for a hypotenuse of 5.0000". Gage blocks should not exceed 0.500".



From 0°



To any angle in a minute



KWIK TILT.....\$675.00

Includes the following:

- One Kwik Tilt Fixture.
- Set of four (4) .5000" Pins for the correspondent Holes.
 - Set of ten (10) Kwik Pin-Gages for increments of 1, 2, 3, 4 and 5 degrees.
- Storage case.

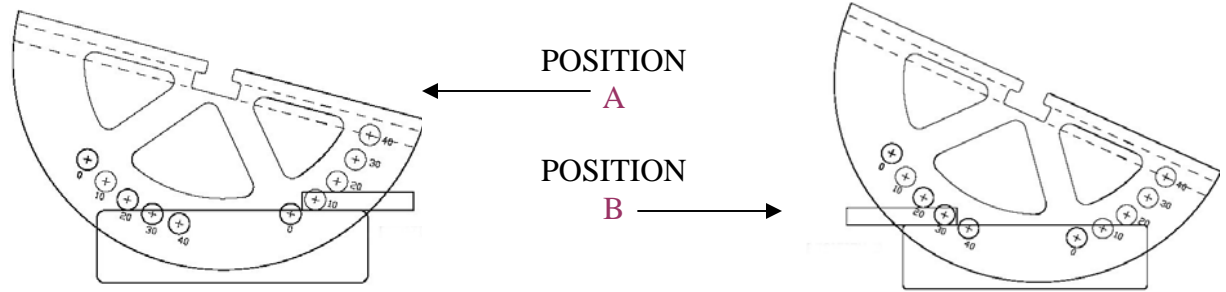
Call and order yours Today!
800-423-5145



PRODUCTS INCORPORATED

www.roviproducts.com

800-423.5145



Instructions

Locate corresponding holes for desired angle. Place 1/2" pins into the four holes. Drop the Kwik Tilt into your vise making sure that the dowel pins are resting on top of the Vise Jaws (Use the **guide** for corresponding pin sizes to match your angles). Tighten the vise securely so that the Kwik Tilt will not move.

• Use, Non Lifting Vise Jaws, such as the **ACCU-LOCK™** type. Jaws must have a minimum height of 1.625" and be at least 6" in length.

• **NOTE:** For other angles, use Gage Blocks calculated, using a sine table for a hypotenuse of 5.0000". Gage blocks should not exceed .500"

| SELECT ANGLE (DEGREE) | PLACE 0.5000" PINS ON CORRESPONDENT HOLES (4 PLACES) | SET KWIK PIN ON POSITION A | SELECT ANGLE (DEGREE) | PLACE 0.5000" PINS ON CORRESPONDENT HOLES (4 PLACES) | SET KWIK PIN ON POSITION B |
|-----------------------|--|----------------------------|-----------------------|--|----------------------------|
| 10 | 10-10 | N/A | 0 | 00-00 | N/A |
| 9 | 10-10 | 0.0870" | 1 | 00-00 | 0.0870" |
| 8 | 10-10 | 0.1745" | 2 | 00-00 | 0.1745" |
| 7 | 10-10 | 0.2615" | 3 | 00-00 | 0.2615" |
| 6 | 10-10 | 0.3485" | 4 | 00-00 | 0.3485" |
| 5 | 10-10 | 0.4355" | 5 | 00-00 | 0.4355" |
| 20 | 20-20 | N/A | 10 | 10-10 | N/A |
| 19 | 20-20 | 0.0870" | 11 | 10-10 | 0.0870" |
| 18 | 20-20 | 0.1745" | 12 | 10-10 | 0.1745" |
| 17 | 20-20 | 0.2615" | 13 | 10-10 | 0.2615" |
| 16 | 20-20 | 0.3485" | 14 | 10-10 | 0.3485" |
| 15 | 20-20 | 0.4355" | 15 | 10-10 | 0.4355" |
| 30 | 30-30 | N/A | 20 | 20-20 | N/A |
| 29 | 30-30 | 0.0870" | 21 | 20-20 | 0.0870" |
| 28 | 30-30 | 0.1745" | 22 | 20-20 | 0.1745" |
| 27 | 30-30 | 0.2615" | 23 | 20-20 | 0.2615" |
| 26 | 30-30 | 0.3485" | 24 | 20-20 | 0.3485" |
| 25 | 30-30 | 0.4355" | 25 | 20-20 | 0.4355" |
| 40 | 40-40 | N/A | 30 | 30-30 | N/A |
| 39 | 40-40 | 0.0870" | 31 | 30-30 | 0.0870" |
| 38 | 40-40 | 0.1745" | 32 | 30-30 | 0.1745" |
| 37 | 40-40 | 0.2615" | 33 | 30-30 | 0.2615" |
| 36 | 40-40 | 0.3485" | 34 | 30-30 | 0.3485" |
| 35 | 40-40 | 0.4355" | 35 | 30-30 | 0.4355" |
| | | | 40 | 40-40 | N/A |
| | | | 41 | 40-40 | 0.0870" |
| | | | 42 | 40-40 | 0.1745" |
| | | | 43 | 40-40 | 0.2615" |
| | | | 44 | 40-40 | 0.3485" |
| | | | 45 | 40-40 | 0.4355" |



Sine & Tilt Table

Gauge Pin Guide